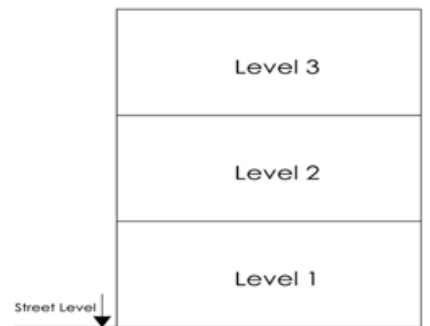


Misrah l-Inbid

Plot 2

Xewkija



Plot 20
Ground Floor (Level 1)

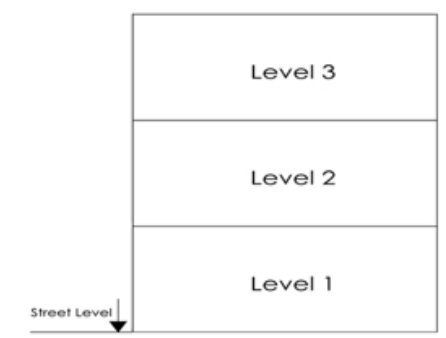
Artistic Impressions only
Beams may protrude. Minimum
internal height under beam is 2.1m

Internal : 74 m² External : 17 m²
Total Area : 91 m²

Misrah l-Inbid

Plot 20

Xewkija



Plot 20
First Floor (Level 2)

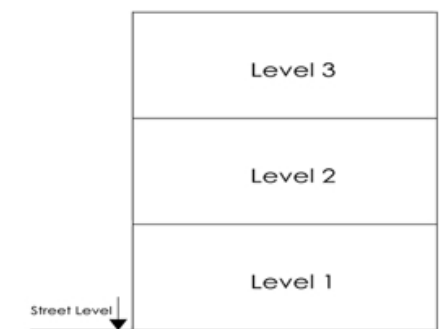
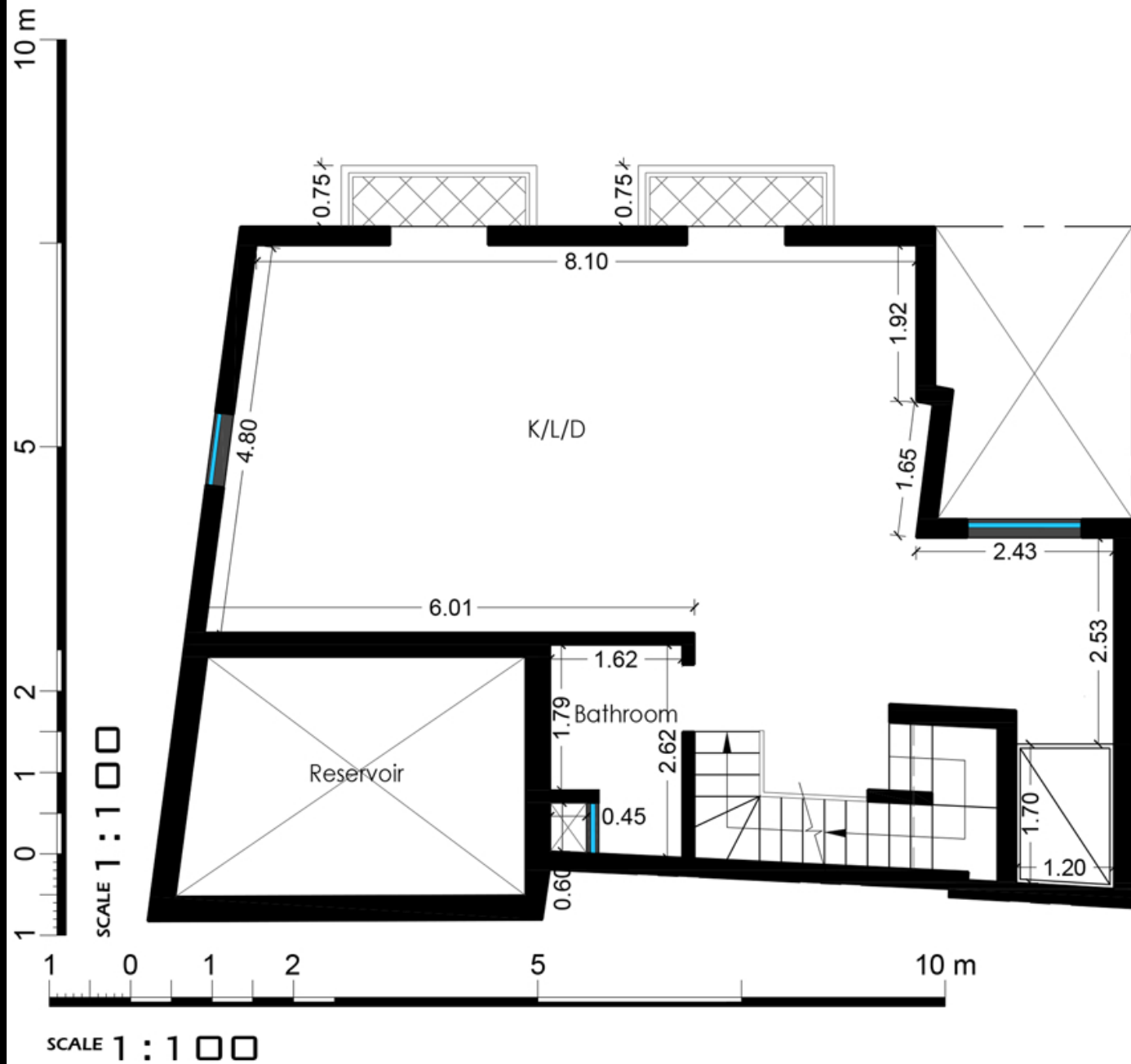
Artistic Impressions only
Beams may protrude. Minimum
internal height under beam is 2.1m

Internal : 74 m² External : 0 m²
Total Area : 74 m²

Misrah l-Inbid

Plot 2

Xewkija



Plot 20
Second Floor (Level 3)

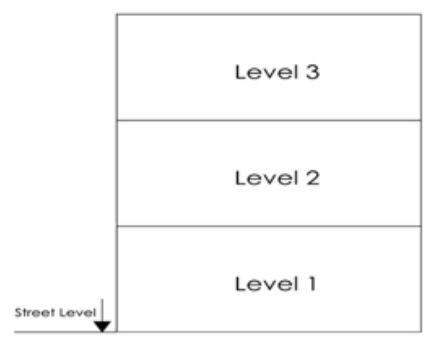
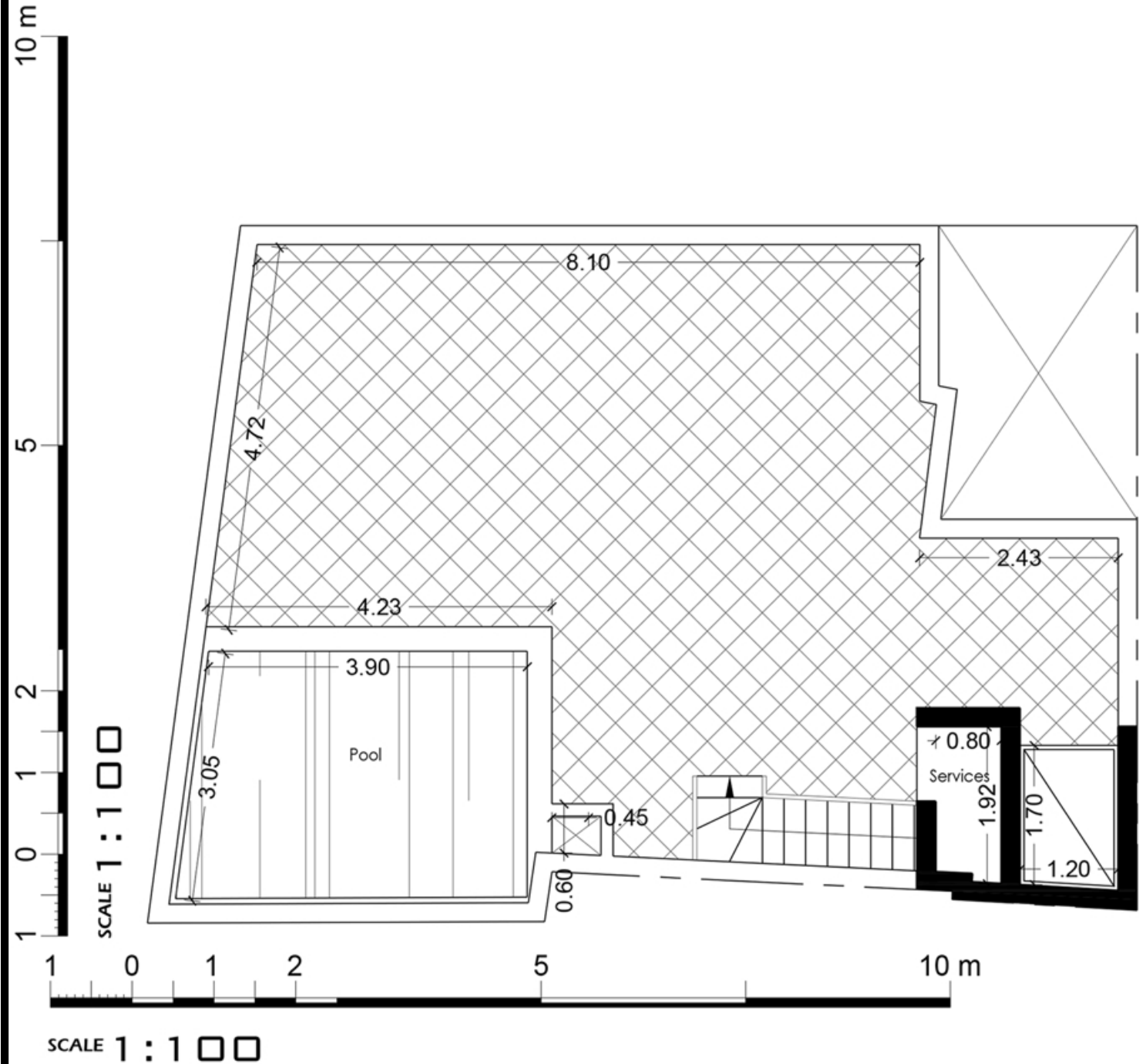
Artistic Impressions only
Beams may protrude. Minimum
internal height under beam is 2.1m

Internal : 68 m² External : 2 m²
Total Area : 70 m²

Misrah l-Inbid

Plot 20

Xewkija



Plot 20
Roof Floor

Artistic Impressions only
Beams may protrude. Minimum
internal height under beam is 2.1m

Internal : 80 m² External : 2 m²
Total Area : 82 m²